



IGLU MELBOURNE CITY » STUDIO APARTMENTS



SLEEPS 1-2



PRIVATE BATHROOM



FREE UNLIMITED WI-FI



AIR CONDITIONING

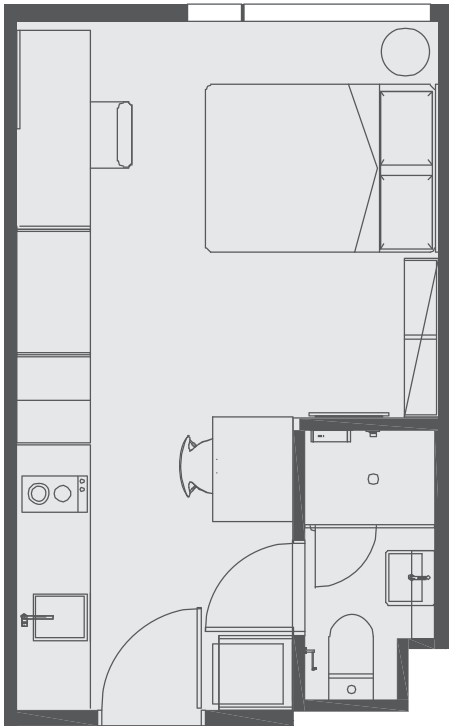


Live in the heart of Melbourne in a cool studio apartment, with private living and study space, and friends next door.

Sound cool?

- Each studio has a private en-suite bathroom and reverse cycle air conditioning (cooling and heating)
- Features well-appointed kitchenette with eating area for self-catering
- Free unlimited high-speed wi-fi is included and available throughout

Sample floor plans



FLOOR PLAN A › STANDARD OR PREMIUM STUDIOS



FLOOR PLAN B › STANDARD STUDIOS ONLY

Standard and Premium studios are available.

Premium Studios offer district views over the Queen Victoria Markets. They are on the street side of the podium and tower (from level 10 upwards).

Each studio apartment is equipped with:

- › Secure swipe card access
- › Access to high-speed wi-fi
- › Wall-mounted Smart TV
- › Under-bed storage
- › Private en-suite bathroom
- › Air-conditioning and heating
- › Study desk, chair and lamp
- › Pinboard and bookshelf
- › Built-in wardrobe and full length mirror
- › Kitchenette with microwave/convection oven, 2-burner stovetop, refrigerator
- › Kettle, toaster, vacuum cleaner

EN-SUITE BATHROOM

- › Shower
- › Toilet
- › Basin
- › Mirror
- › Shelving
- › Towel rail
- › Exhaust fan
- › Storage cabinet

All images are illustrative only. They are indicative of Iglu's finishes and features.



ONE HANDY ALL-INCLUSIVE FEE

Your weekly rent includes all of this plus your water, electricity, gas, access to 24/7 onsite support and lots of cool events.



Iglu Melbourne City. 229 Franklin Street, Melbourne VIC 3000

+61 3 9002 5600 melbournecity@iglu.com.au

#livecoolatiglu | iglu.com.au/melbournecity